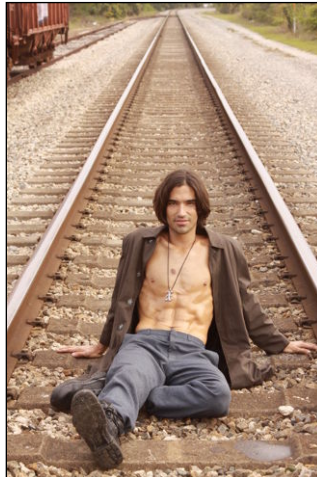
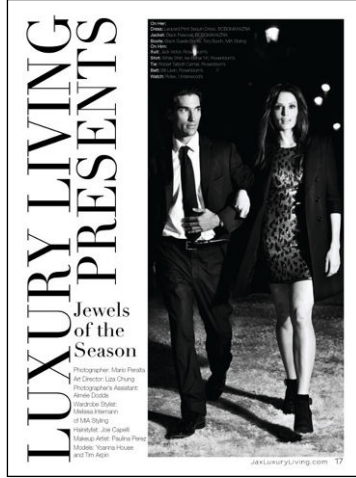




CHOSEN MODEL MANAGEMENT TIM ARPIN

HEIGHT: 6'2.5" HAIR: BLACK EYES: BROWN SUIT: 41" LENGTH: L SHIRT: 15.5" SLEEVE: 35" WAIST: 32" INSEAM: 33" SHOE: 13





CHOSEN MODEL MANAGEMENT TIM ARPIN

HEIGHT: 6'2.5" HAIR: BLACK EYES: BROWN SUIT: 41" LENGTH: L SHIRT: 15.5" SLEEVE: 35" WAIST: 32" INSEAM: 33" SHOE: 13

